

# Romac Series 8 Data Files Installation

The Series 8 data files must be installed in order to use the Romac Production Control and/or Inventory Control programs. The installation program can be downloaded from [www.romacinc.com/downloads](http://www.romacinc.com/downloads).

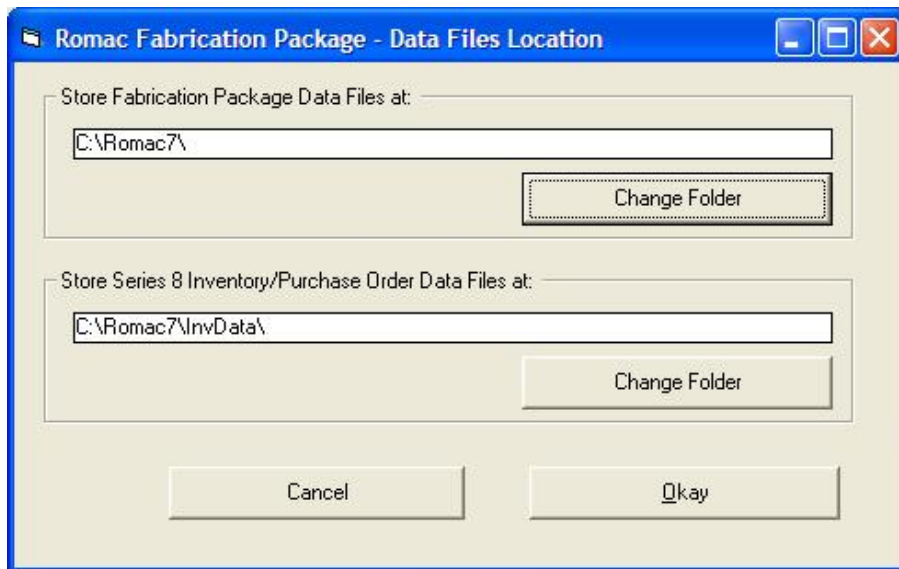
If running the software on a single workstation where the programs and data will be on the same computer, the data files should be installed onto the workstation. If you want to install the data onto a server where the data will be accessed from a single workstation or from multiple workstations, the data files should be installed onto the server.

If the default installation parameters are used, the data files installation program will create 3 folders; C:\Romac7, C:\Romac7\ProdCtrl and C:\Romac7\InvData. Permissions for these folders should be set to allow full control by all users allowing the users to create, update and delete files and folders.

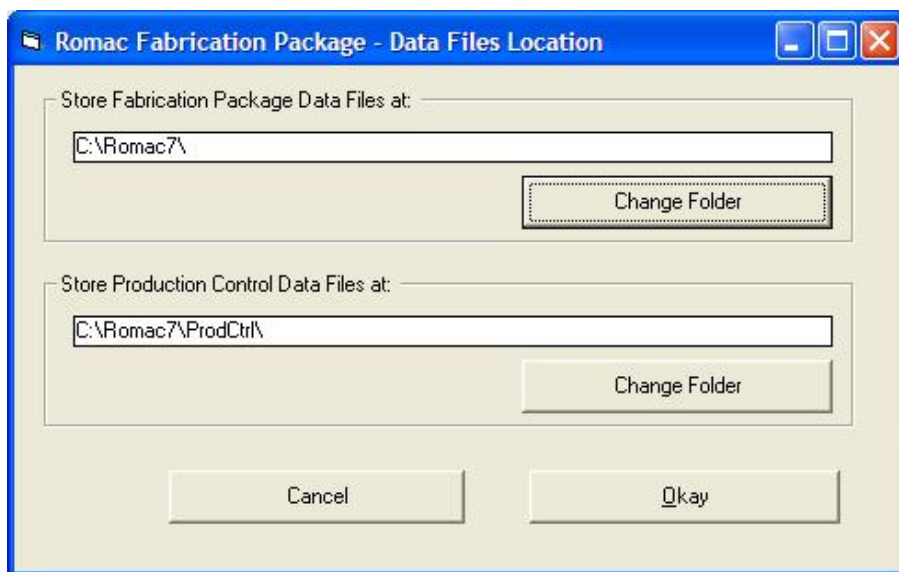
The installation programs for the applications can be downloaded at [www.romacinc.com/downloads](http://www.romacinc.com/downloads). The Production Control installation program will include all programs required to run the Production Control software. To install the Inventory application, download and install both the Inventory Control and Purchase Order programs.

If the programs are to run through Terminal Services, these programs should be installed onto the server and configured to run through Terminal Services. If the programs are to be used on a workstation, the programs should be installed onto the workstations. Note, the programs can run through a combination of terminal services applications and workstation applications.

Once installed, the data files location must be set on each workstation (and through terminal services if used). To set the data files location, on each workstation, run either the Inventory Control or Purchase Order program. You will probably get an error message – click Okay then the following screen should be displayed. The ‘Fabrication Package Data Files’ location will be the Romac7 folder on the server. Click ‘Change Folder’ then find the Romac7 folder, highlight the folder name then click Okay. The ‘Inventory/Purchase Order Data Files’ location will be Romac7\InvData. Use the Change Folder button to find and highlight that folder. When both folders are located and you click Okay to exit this screen, the program will terminate. It is not necessary to re-boot the computer.



After then Inventory/Purchase Order data locations have been set, run the Production Control program to set the Production Control data location. The 'Fabrication Package Data Files' location should be retained from the previous setting. The location of the 'Production Control Data Files' will be Romac7\ProdCtrl. Use the Change Folder button to find and highlight this folder. Again, the program will terminate when you exit this screen.



If in the future, you need to change the data files locations, these screens can be accessed through the program's menu option Maintenance | Set Configuration | Data Files Location.

This should complete the initial program installation and setup. If you encounter and problems or have any questions, contact Roger McCarter at 865-426-9634.

All data that will require backup will be in the Romac7 folder and all subfolders of Romac7. It is not normally necessary to back up the program files.